



# ACO Gully EG150

## Stainless Steel Gully System

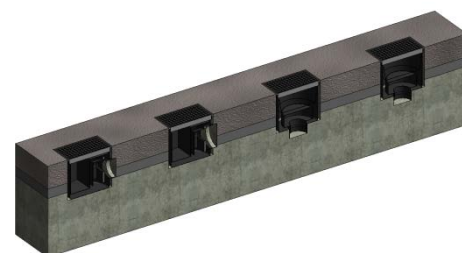
### User Guide for Autodesk Revit files

#### The ACO Gully EG150 Range

ACO Gully EG150 range is contained in 4 individual Revit Families.

- ACO Gully EG150 for Vinyl Sheet Floors
- ACO Gully EG150 for Cementitious / Resin / Screed or Tiled Floors
- ACO Gully EG150 with DPM Bonding
- ACO Gully EG150 2 Part System with Mesh Grate  
(Also used in Cementitious / Resin / Screed & Tiled Floors)

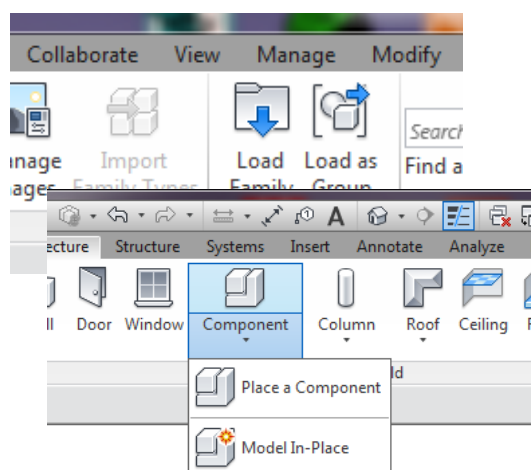
Each range has options for horizontal and vertical outlets, in fixed height and telescopic variants, and with provision for back inlets.



#### Loading ACO Gully EG150 files into your project

Each system is modelled as a generic family that can simply be loaded into your project.

1. Download the ACO Gully EG150 file and save it to a suitable location.
2. Open your project and navigate to an appropriate view.
3. Navigate to the “insert” icon on the Revit ribbon and click “Load Family”.
4. Select the ACO Gully EG150 file you saved earlier.
5. The file can now be placed into your project. Navigate to the “Architecture / Component” icons on the Revit ribbon and click “Place a Component”



**Note that all the ACO Gully EG150 files are “floor” based items.**

#### ACO BUILDING DRAINAGE

A division of ACO Technologies plc  
ACO Building Drainage, ACO Business Centre,  
Caxton Road, Bedford, MK41 0LF

Tel: 01462 816666  
Fax: 01462 851490

e-mail: [abdtechnical@aco.co.uk](mailto:abdtechnical@aco.co.uk)  
website: [www.acobd.co.uk](http://www.acobd.co.uk)



## Using the ACO Gully EG150 Stainless Steel Gully System

### Step 1: Select the required Gully – based on proposed floor finish.

ACO Gully EG150 gullies comprise one-piece or telescopic two-part systems with options to suit varying floor finishes.

All telescopic height variants provide 360 degree rotation and 7.5 degree pitch and roll adjustment.

All include a removable in-line Foul Air Trap (with 50mm water seal) and optional removable sieve.

Outlet diameters (for pipe connections) are 110mm diameter vertically and 75mm diameter horizontally.

Back inlet variants are supplied with fully interchangeable adaptors to suit 32mm (1 ¼") and 40mm (1 ½") waste pipes.

### Step 2: Select the Grate

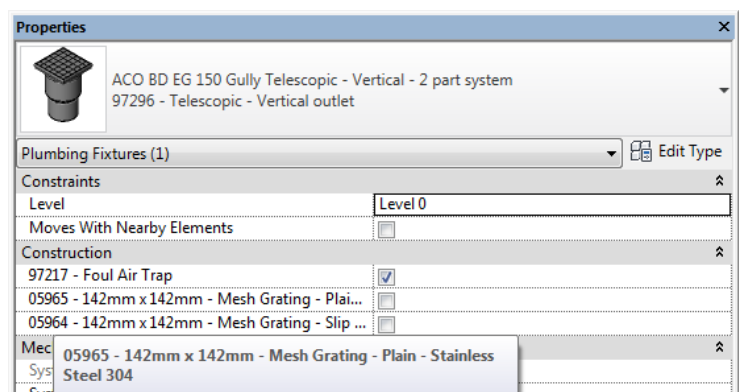
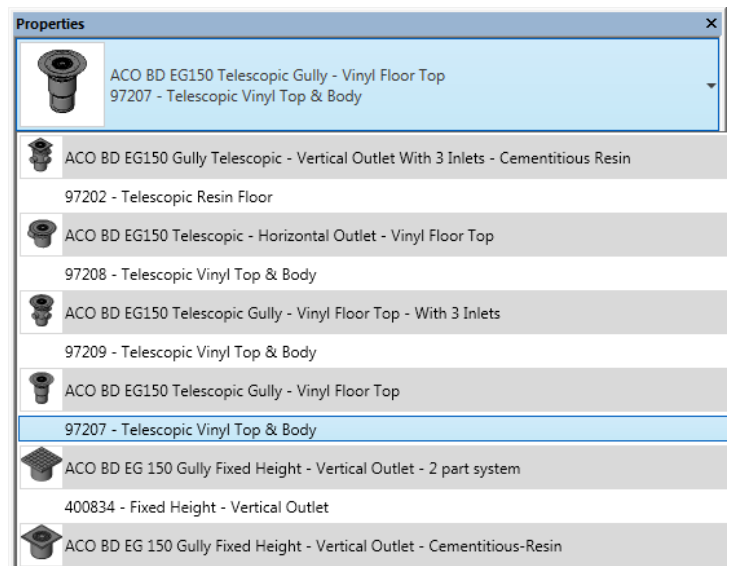
Additional features have been built into the ACO Gully EG150 file that allows for a simple selection of the range of grates.

Grate styles include a range of grate surface styles, materials and load class characteristics.

To choose a grate style, position the channel within the project and then select it. Once selected the "properties" box will appear and selection of the grate style can be made by means of the tick box feature as shown.

*By default, a generic grate is always displayed on a channel when it is placed in a project. This generic grate will always be displayed and will not amend visually, no matter which grate is selected by tick box in the properties box. The grate cannot be hidden.*

Once the grate type selection has been made in the properties box, it can, for example, be referenced for costing, scheduling and maintenance purposes.





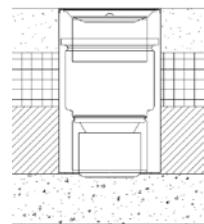
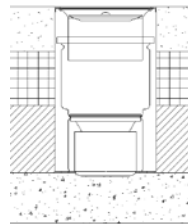
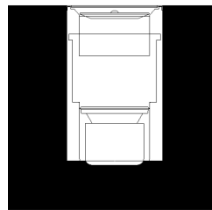
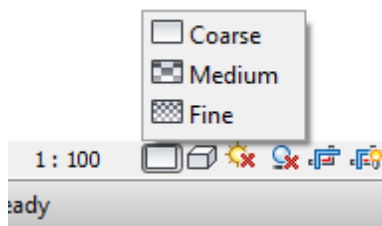
## Manipulation

The family components can simply be placed and arranged using the standard Revit “modify” tools of Move, Copy, Rotate and Align.



## Sectional Accuracy

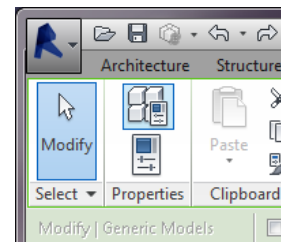
ACO Gully EG150 family components are designed with varying levels of detail, which can be accessed via the Revit “Detail Level” function.



## Type Properties

The ACO Gully EG150 file has a collection of useful information embedded with it, including site installation and operations and maintenance details.

This information, along with much more is stored within the files or available through hyperlinks within the component type properties.



1. To access the information within a component, simply select the item and click the “Type Properties” icon on the Revit ribbon at the top of the dialogue.
2. The “Type Properties” information screen will now display. Simply scroll up and down the screen to find the information you require.



## Material Library and Notes

The ACO Gully EG150 file contains materials that are already pre-loaded into the components. The files can be pre-loaded into your company template.

The ACO Gully EG150 family has been created in Revit 2014.

